

# Installation instruction do88 performance Intercooler for Volvo S60/V60 T6 MY10-

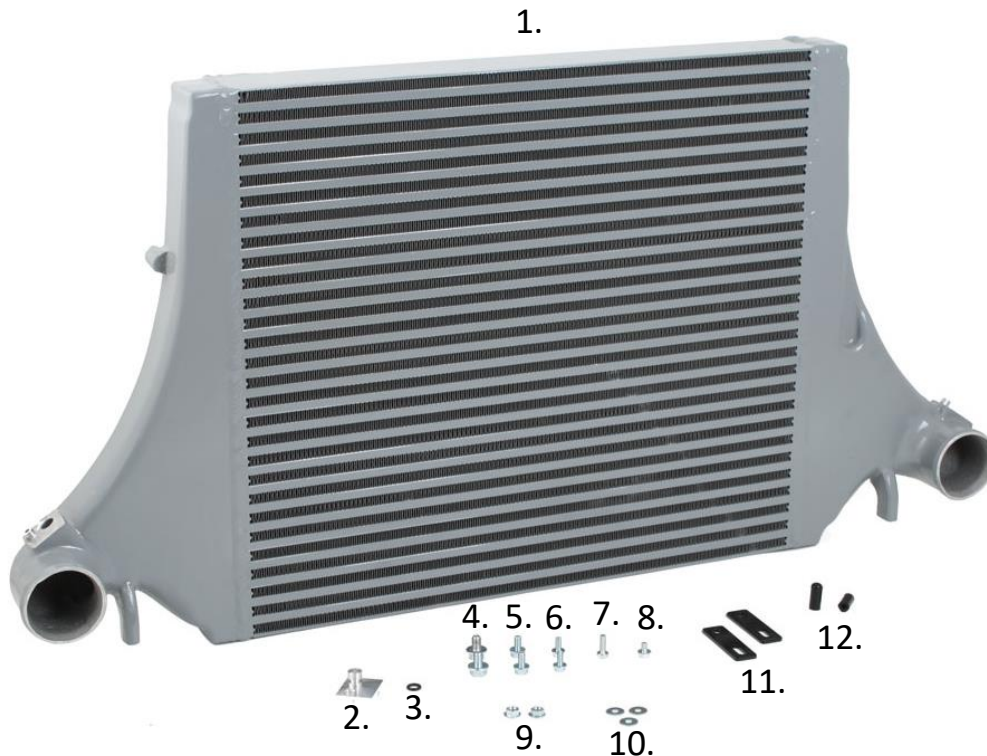
Part number: ICM-220

This instruction shows how to replace the OEM intercoolers with do88 performance intercoolers.

At this type of installation we always recommend that you have mechanical experience and knowledge about safety during work on vehicles.

Parts included:

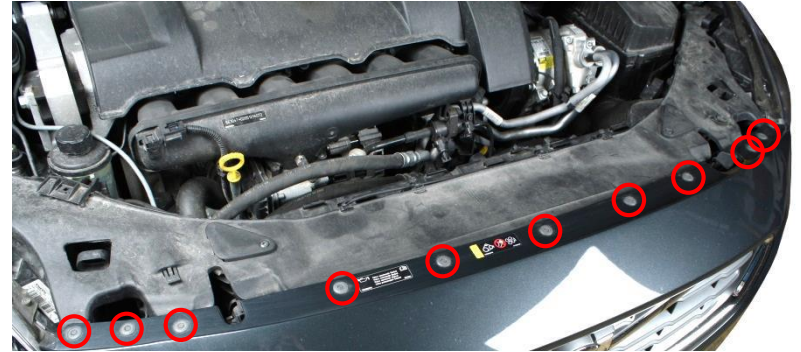
1. 1pc do88 Performance Intercooler
2. 2pcs Sensor connection cover
3. 2pcs O-ring for sensor cover
4. 2pcs M8x12mm screws
5. 2pcs M6x12mm screws
6. 2pcs M5x12mm screws
7. 1pc Torx T25x16mm screw
8. 2pcs M5x8mm screw
9. 2pcs M6 nuts
10. 4pcs M5 washer
11. 2pcs brackets
12. 2pcs 4mm Silicone caps



This installation instruction are written according to our installation of this intercooler performed on a Volvo V60 T6 AWD MY-12. Other vehicles that this intercooler also fit to might have some differences in the way of installation.



1. Loosen the 10 plastic rivets on top of the bumper by pressing the middle part down and then pull rivet up by its collar.



2. In the wheel arch on both sides, remove 4pcs Torx T25.



3. Remove the head lights. On both sides pull the two large plastic locking pins straight up.  
  
Gently pull the head light forward until you can reach and disconnect the cable connector.

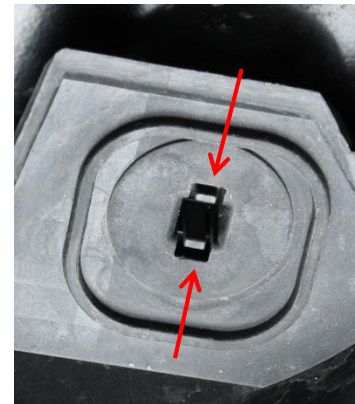
4. Remove the plastic cover underneath the radiator. With a flat screwdriver pry the plastic tabs so you can fold down the front part of this plastic cover.



5. On both sides remove 1 pc Torx T25 in the front lower end in each wheel arch.



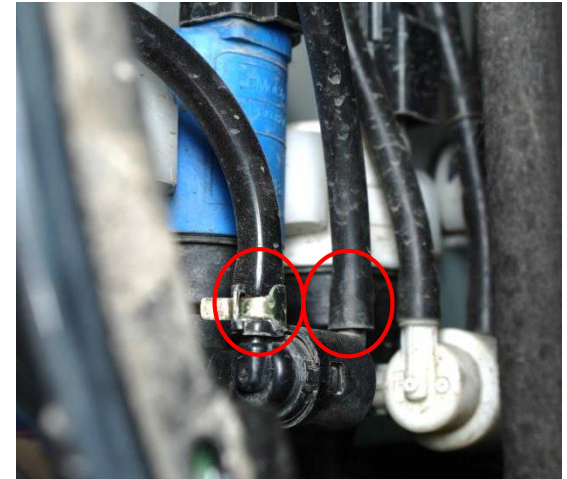
6. In the lower edge of the bumper remove 3pcs plastic rivets. Press both the plastic tabs towards the middle and then gently pull it out in its collar.





- 7.** Inside the left wheel arch behind the inner fender you need to disconnect the hoses for the head light washers (if your car is equipped with this).

Carefully pull the hoses of their connections and then immediately seal the connections on the pump with the included silicone caps to prevent leakage.



- 8.** On both sides behind the inner fenders pry the bumper plastic over the plastic clip edge with a flat screw driver.

- 9.** This step should be performed with the help of an assistant.

On both sides, pull the bumper cover out from the fender to loosen the plastic clips that holds it in place.

Remove the bumper cover from vehicle by gently pulling it straight forward from car until it comes loose from clips.

Once the bumper is about 15cm out from the car, disconnect the two large cable connector located in the front of the right inner fender.

Now remove the bumper from the car.

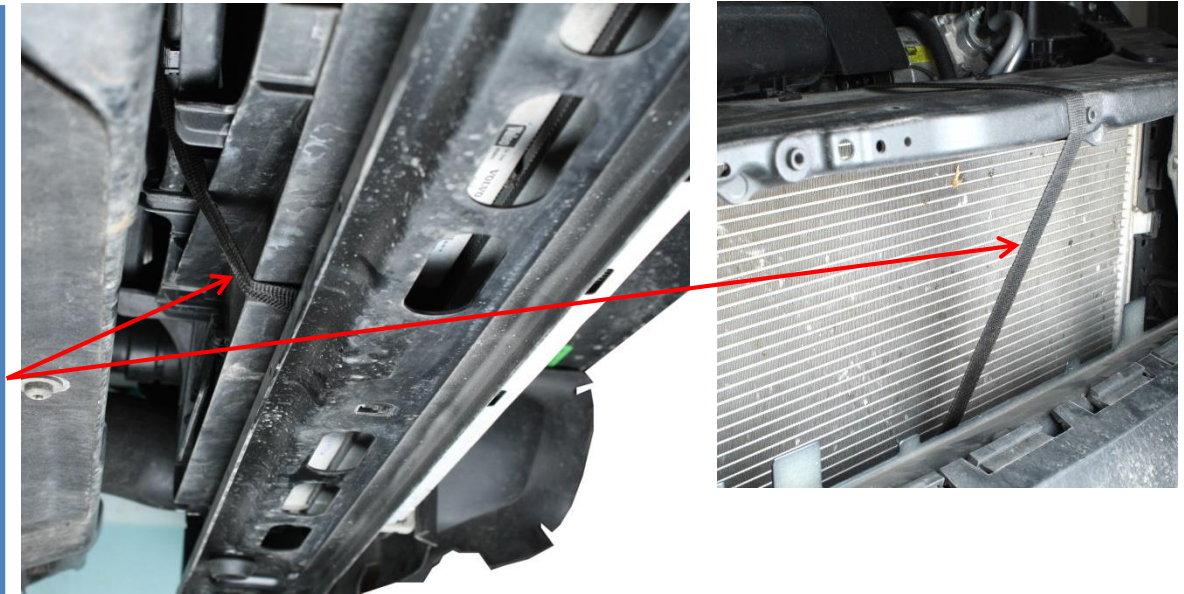


**10.**

To be able to remove intercooler the lower radiator support member must be removed. While this is removed the radiator and AC-condenser needs to be supported.

Use one or two long straps to support the radiator and AC-condenser.

Pull the strap in the gap between the AC-condenser and intercooler, then in gap between the bottom of the radiator and the radiator support member. Before tightening the strap make sure it does not damage anything.

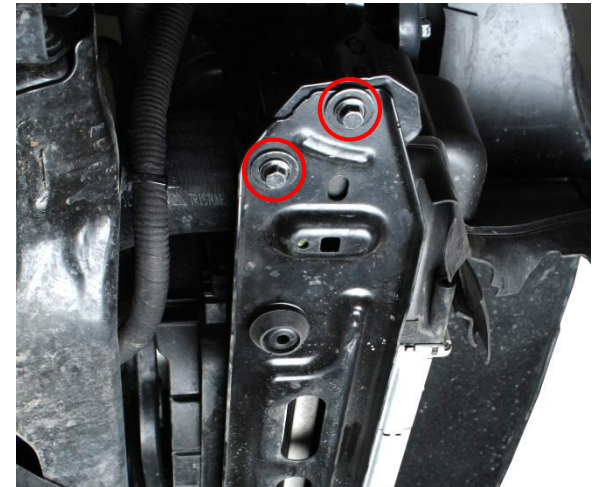


**11.**

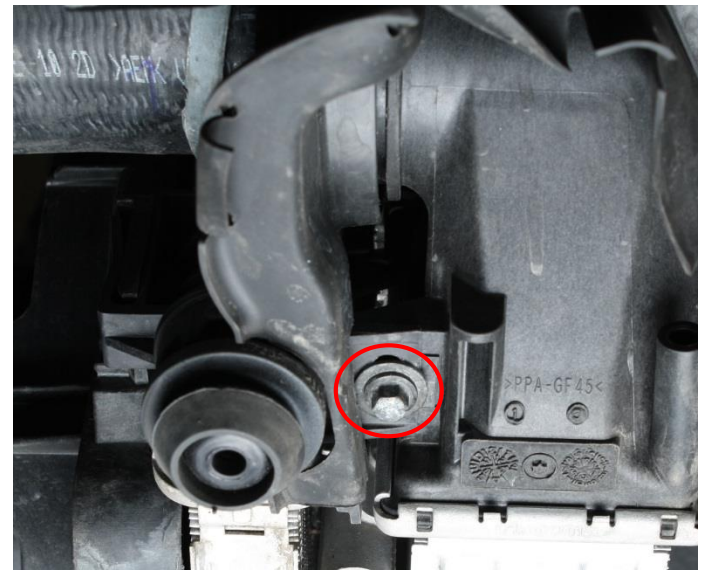
On both sides of the radiator support member remove 2x Hex 10mm. Remove it from the vehicle.

**12.**

Loosen the hose clamps on both the intercooler inlet and outlet. Pull the hoses off the connections.



13. Remove the 2pcs Hex 8mm on the intercooler bottom brackets. (The photo only shows the right side screw)



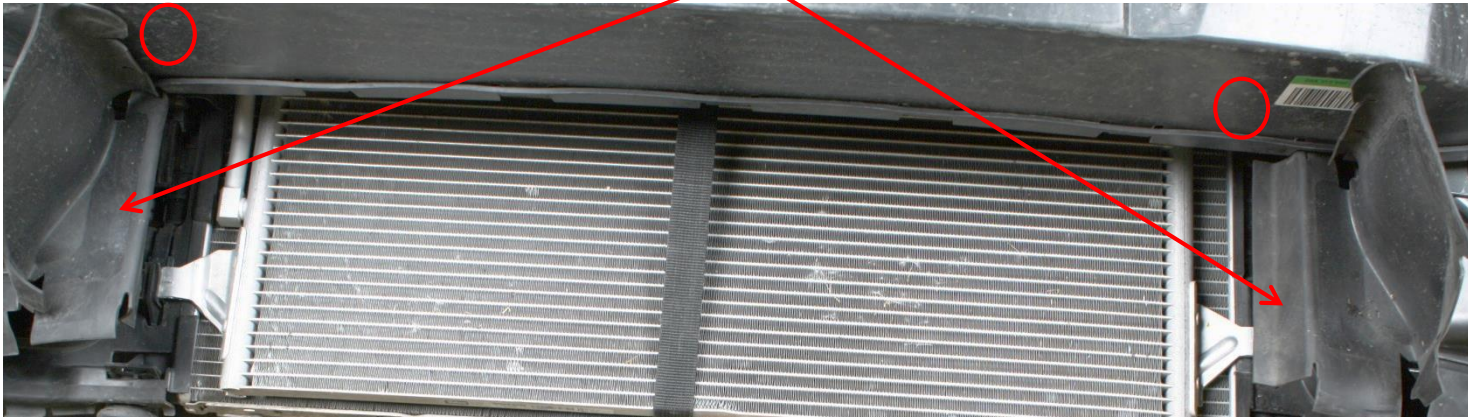
14. Now gently remove the intercooler from vehicle downwards. Remember to disconnect the sensor cable from the intercooler outlet once you have clearance to reach it.

15. Remove the sensor from the OEM intercooler 1pc Torx T25. Install the sensor in the flange on the same side it was located on your OEM intercooler. Fasten the sensor with the included Torx T25x16mm. Install the included sensor cover plate with o-ring installed in groove in the sensor flange on the other side of the intercooler. Fasten it with the included M5x8mm screw and washer. For some vehicles there are no sensor located on the intercooler at all, in these cases install one sensor cover in each sensor flange.





- 16.** Remove these two plastic air guides. They are fastened with a plastic rivet on the backside of the crash beam. Remove these by pressing the middle part down and then pull rivet up by its collar.



- 17.** Support the radiator and AC-condenser with something stable from the underside. And then remove the strap you installed in step 10. (The strap cant be kept since it will interfere with the do88 intercooler).

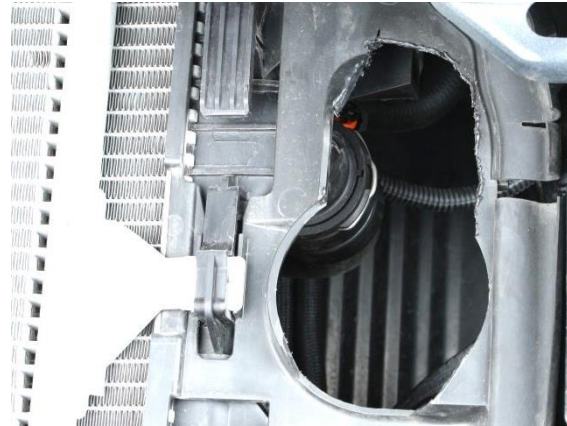
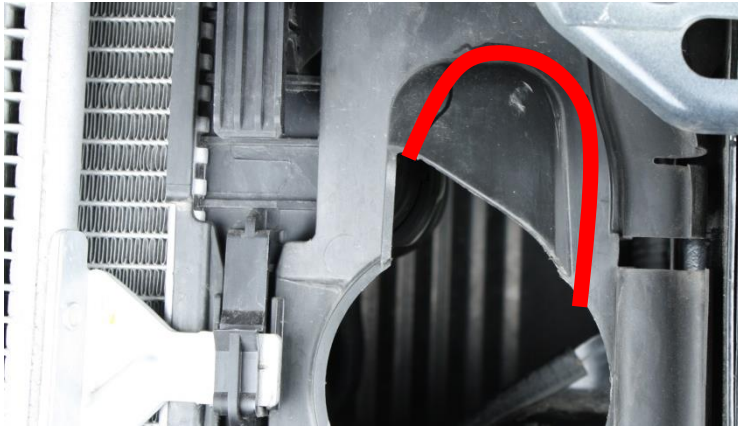
Now remove the strap.



18.

The plastic above the intercooler connection with the sensor installed to it needs to be trimmed slightly to make space for the sensor and cable. Carefully cut the plastic according to the photo below. Use a Snap-off blade knife with sharp blade!

**Be careful not to cut yourself!**



19.

This step should be performed with the help of an assistant.

Now lift the do88 performance intercooler into place, it is a tight fit. So please take your time to carefully adjust into the right place. Make sure the 2 bottom brackets align with the brackets the OEM intercooler was fastened to.

Install the 2pcs included M5x12 screws and washers into the 2 bottom intercooler brackets. Since this intercooler is quite heavy we recommend that you support its weight with a strap until you have installed the two top brackets as well.

Connect the cable to the sensor previously installed on the intercooler.

20.

Connect the inlet and outlet intercooler hoses and tighten the hose clamps.

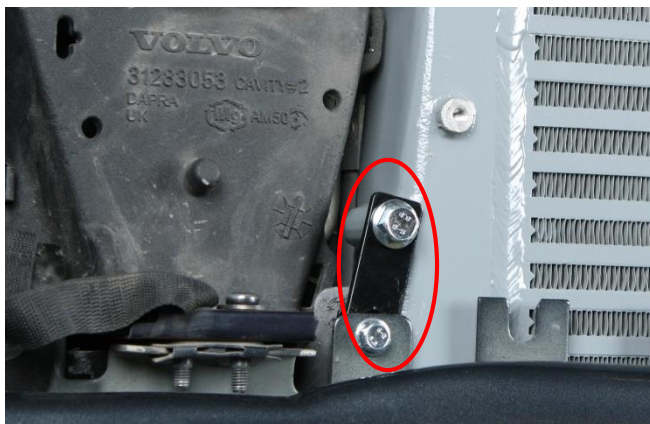
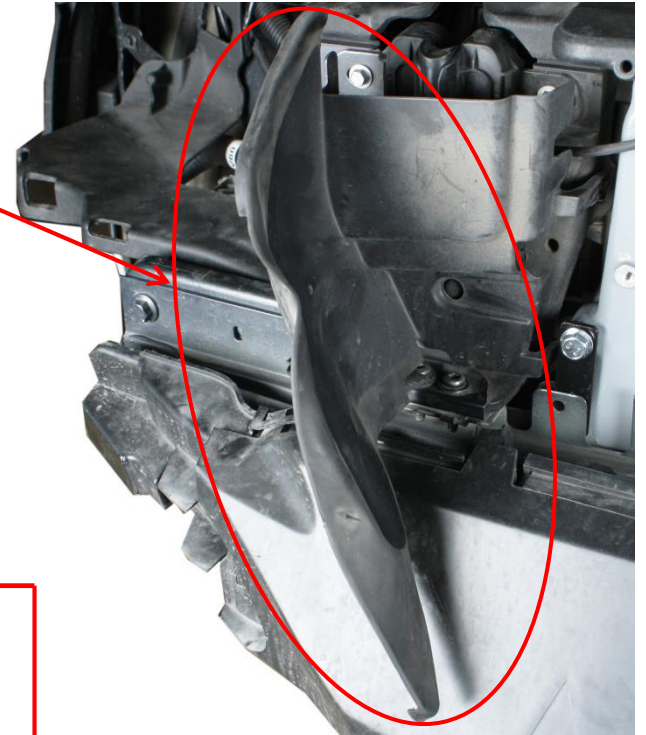


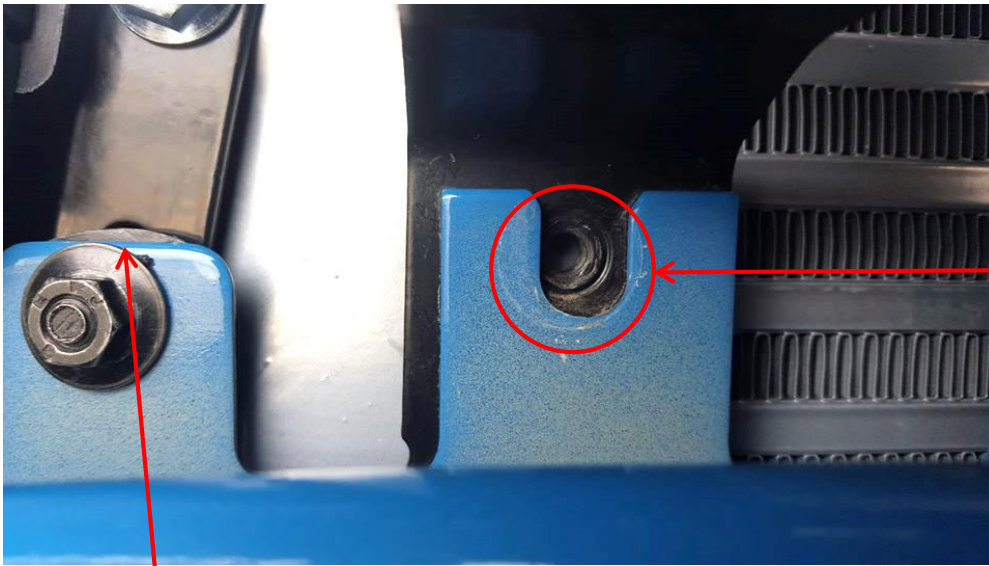
**21.** Re-install the radiator support member you removed in step 11.

**22.** On both sides remove the upper air guide. Use a flat screw driver to pry the 3 plastic clips.

**23.** This step should be performed with the help of an assistant. If you have radar on your car please see step 23\*.

1. On both sides install the included brackets on the intercooler with the M8x12mm screws. Do not tighten them yet.
2. On both sides install the oval hole with the included M6x12mm screws and nuts into the brackets on the crash beam. Let the nuts rest inside the groove on the plastic lip shown on the photo. Do not tighten them yet.
3. Now let your assistant gently lift the entire intercooler up a bit. Now tighten all screws. This way the 2 top brackets will support the major part of the intercooler weight.



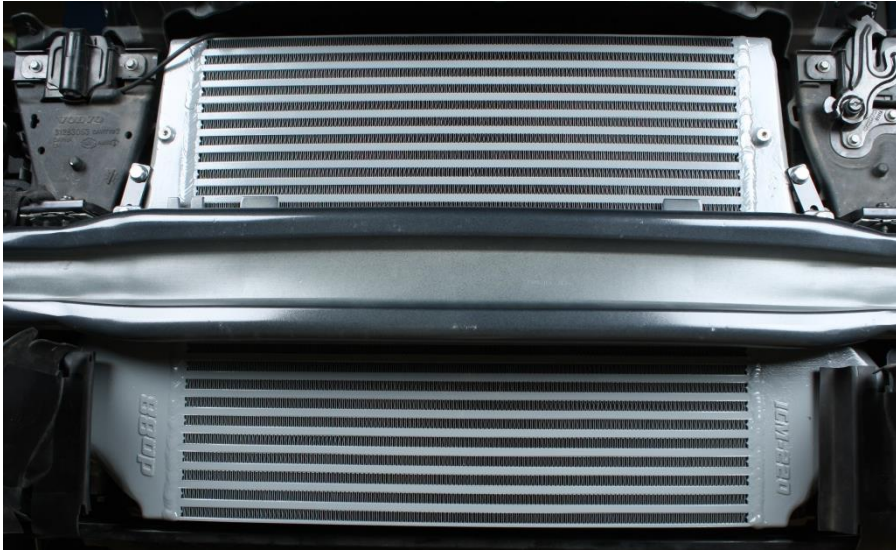


**23\*.**

\*Only for cars with radar / adaptive cruise control.

Apart from the steps in 23, you need to make clearance for the radar unit. This is achieved by placing the plastic shroud in-between the bracket and crash bar bracket.

Exchange the OEM screw marked on the photo with the included M6x12 Hex screw.



24. Install all other parts in reverse order.